

Protecto Wrap®

1170 Primer

**Heavy Bodied
High Wetting
High Penetration
Pipe Tape Primer**

Protecto Wrap Pipeline Protection Systems

Protecto Wrap Company for over 35 years has been known for its excellence in research and development, and the high quality of pipeline protection materials manufactured.

Our products meet or exceed corrosion protective properties of pipe wraps for almost any job specifications and offer you the benefits of our experience and field service to back up the quality of our products.

1170 Primer

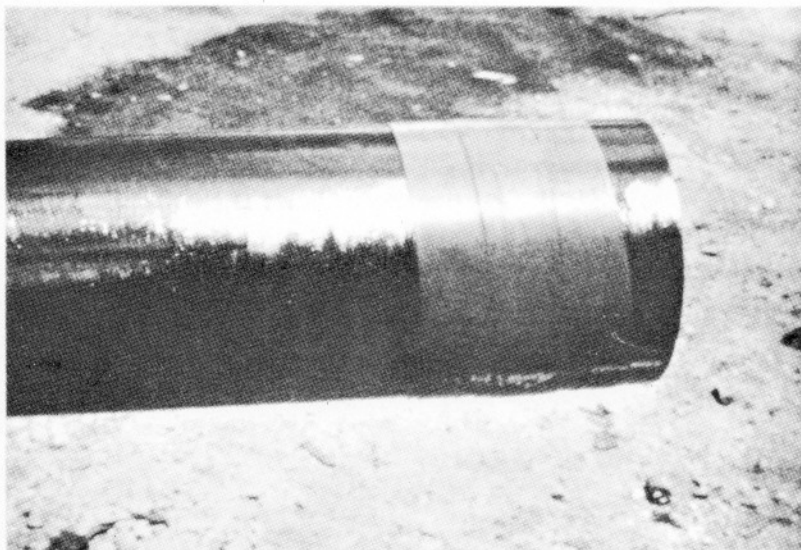
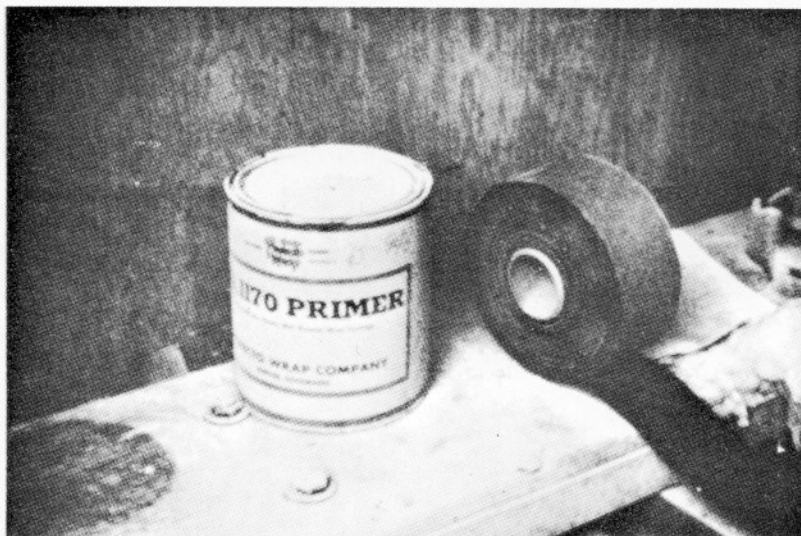
Compare Features

Quick Drying
Excellent Adhesion
High Wetting
High Penetration
Brush, Roll or Spray Application
For Hot Enamel, Torch Applied
or Pressure Sensitive Tapes
Excellent Chemical Resistance

Product Description

Protecto Wrap's 1170 primer is a specially formulated product for use as the primer for Protecto Wrap resin fortified pipe tapes. The primer can be applied by brush or spray methods, and is used on both cold and torch applied tapes, hot enamel or pressure sensitive bonding methods.

1170 primer is a heavy bodied, solvent-release product manufactured by a special process in which refined bitumens, synthetic resins and solvents are blended to form a primer with the highest possible wetting and penetration requirements for almost any field application conditions.



1170 Primer

Application Procedures

1. Clean the surface to be primed of all dirt, rust and foreign elements by the normal wire brush method.
2. Mix the primer thoroughly before application to insure an even and complete blend of the formulation.
3. Apply the primer by either brushing or using a spray machine depending on the equipment available and the size of the area to be covered.
4. Apply the primer at a rate of 250-300 square feet per gallon and apply tape while the primer is not wet but still tacky.

Product Technical Data

General Properties

Adhesion to Steel	Excellent
Adhesion to Tapes	Excellent
Shelf Life	Over 1 Year
Coverage	250-300 Square Feet Per Gallon
Coating Thickness	3.0 mils Avg. (wet film)

Mechanical Properties Test

Value	Method
Specific Gravity	ASTM-D-70
Viscosity	Brookfield RVF Spindle #1
% Solids	Calculated
Flash Point	ASTM-D-56

45 Minimum	
40°F Fisher	
Tag Closed Cup	

Chemical Resistance

Environment	Resistance
Hot and Cold Water	Insoluble
Hot and Cold Brine	Insoluble
Alcohols	Insoluble
Aliphatic Hydrocarbons	Soluble
Aromatic Hydrocarbons	Soluble
Inorganic Acids	Resistive
Alkalis	Resistive
Bacteria	Resistive
Fungus	Resistive
Soils	Resistive
Marine Life	Resistive
Rodents	Resistive

The information and values listed under Product technical data are averages and should not be considered exact values.

1170 Primer

Product and Packaging

Size	Weight	Cans Per Case
1 Qt.	2.5 lbs.	18
1 Gal.	9.5 lbs.	4
5 Gal.	46 lbs.	
55 Gal.	505 lbs.	

Technical Assistance

For application conditions and coverages not covered in this brochure, or for any information you need, please feel free to call on us for technical assistance and information at any time from our laboratory and field staff waterproofing experts.